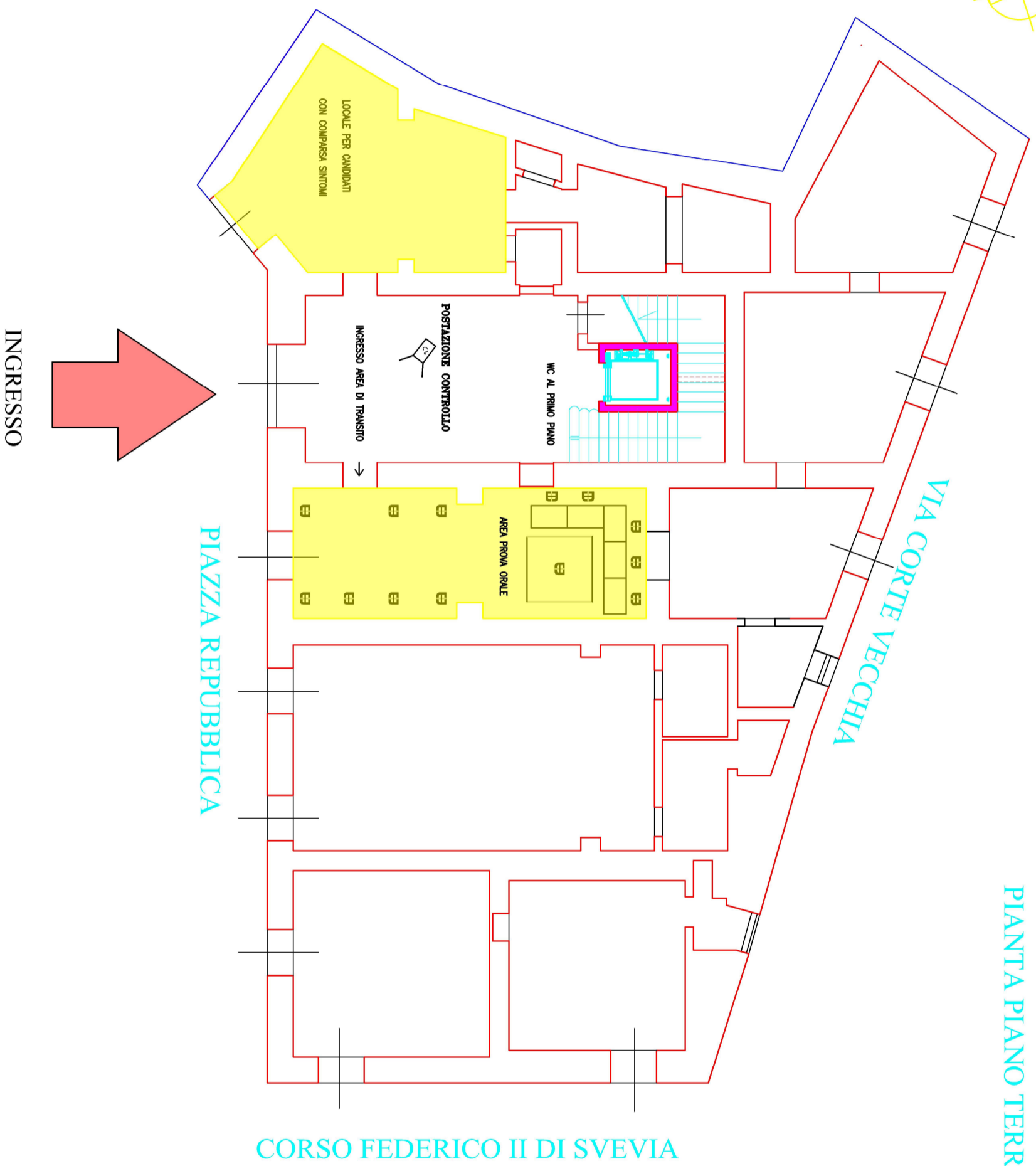
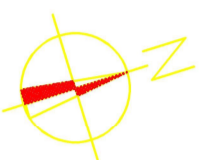


CITTA' DI ALAMURA

ALLEGATO 2BIS PALAZZO SOTTOPIREFETTURA

SEDE PROVA ORALE

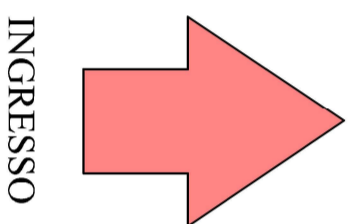
PIANTA PIANO TERRA



CORSO FEDERICO II DI SVEVIA

PIAZZA REPUBBLICA

VIA CORTE VECCHIA



INGRESSO